



Pacific Assets Trust plc

Annual Report and Accounts

2009

Contents

Company Summary	1
Financial Highlights	2
Performance Summary	3
Chairman's Statement	4
Investment Manager and Investment Process	6
Manager's Review	7
Investment Portfolio	10
Board of Directors	12
Report of the Directors	13
Directors' Remuneration Report	22
Statement of Directors' Responsibilities	24
Independent Auditors' Report	25
Income Statement	27
Reconciliation of Movements in Shareholders' Funds	27
Balance Sheet	28
Cash Flow Statement	29
Notes to the Accounts	30
Shareholder Information	41
Ten Year Record	42
How to Invest	43
Notice of Annual General Meeting	44
Corporate Information	

THIS DOCUMENT IS IMPORTANT AND REQUIRES YOUR IMMEDIATE ATTENTION. This document refers to certain matters on which voting action is required. If you are in any doubt as to the action you should take you should consult your stockbroker, bank manager, solicitor, accountant or other independent financial adviser authorised under the Financial Services and Markets Act 2000 immediately.

If you have sold or otherwise transferred all of your shares in the Company, you should immediately send this document to the purchaser or transferee or to the stockbroker, bank manager, solicitor, accountant or other person through whom the sale or transfer was effected for transmission to the purchaser or transferee.

Company Summary

The Company

The Company is an investment trust and its shares are listed on the Official List and traded on the main market of the London Stock Exchange. It is a member of the Association of Investment Companies.

Total assets less current liabilities as at 31 January 2009 were £87.8 million and the market capitalisation was £80.8 million.

Objective

To achieve long-term capital growth through investment in selected companies in the Asia Pacific region and the Indian sub-continent, but excluding Japan and Australasia.

Investment Policy

The Company's investment policy is contained within the Report of the Directors on pages 13 and 14.

Performance Assessment

The Company exists in a competitive environment and aims to be a leader in its peer group. Reflecting this, it should consistently be within the top third of that group measured by net asset value total return.

The Company is committed to building a long term investment record and will assess itself by reference to its peers on a rolling three-year basis.

Management

The Board has appointed F&C Investment Business Limited (the 'Manager'), a wholly owned subsidiary of F&C Asset Management plc, as investment manager. The notice period is six months. Further details of the management contract are provided in note 3 to the Accounts.

Capital Structure

The Company's capital structure is composed solely of Ordinary Shares. Details are given in note 12 to the Accounts.

How to Invest

The Manager operates a number of investment plans which facilitate investment in the shares of the Company. Details are contained on page 43.

You may also invest through your usual stockbroker.

ISA Status

The Company's shares are eligible for Individual Savings Accounts ('ISAs').

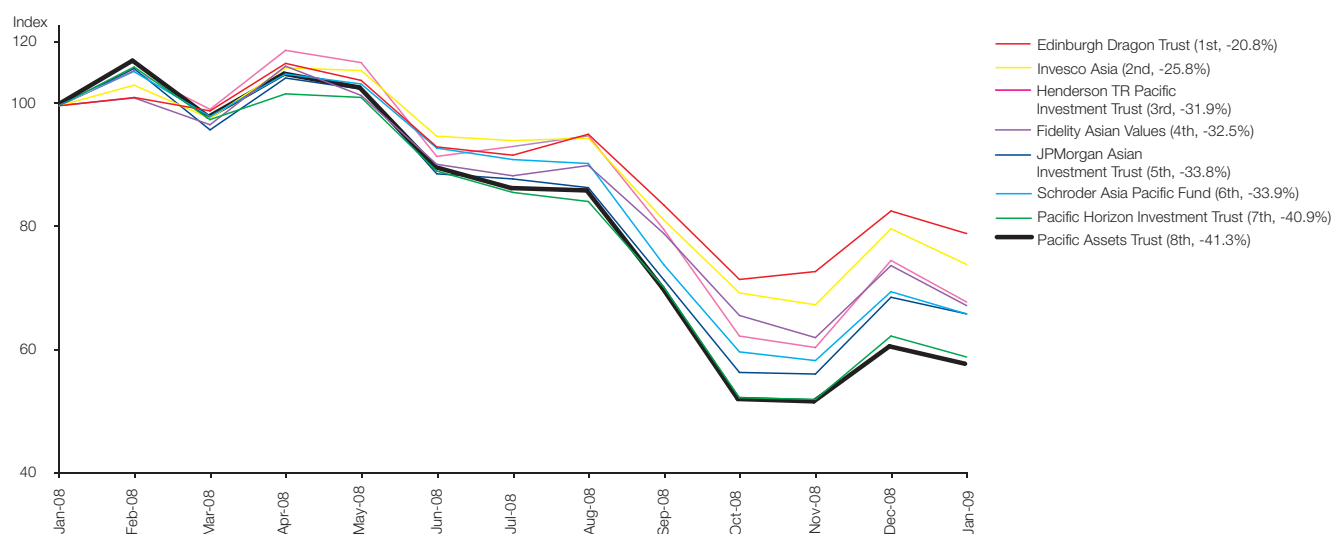
Website

The Company's internet address is www.pacific-assets.co.uk

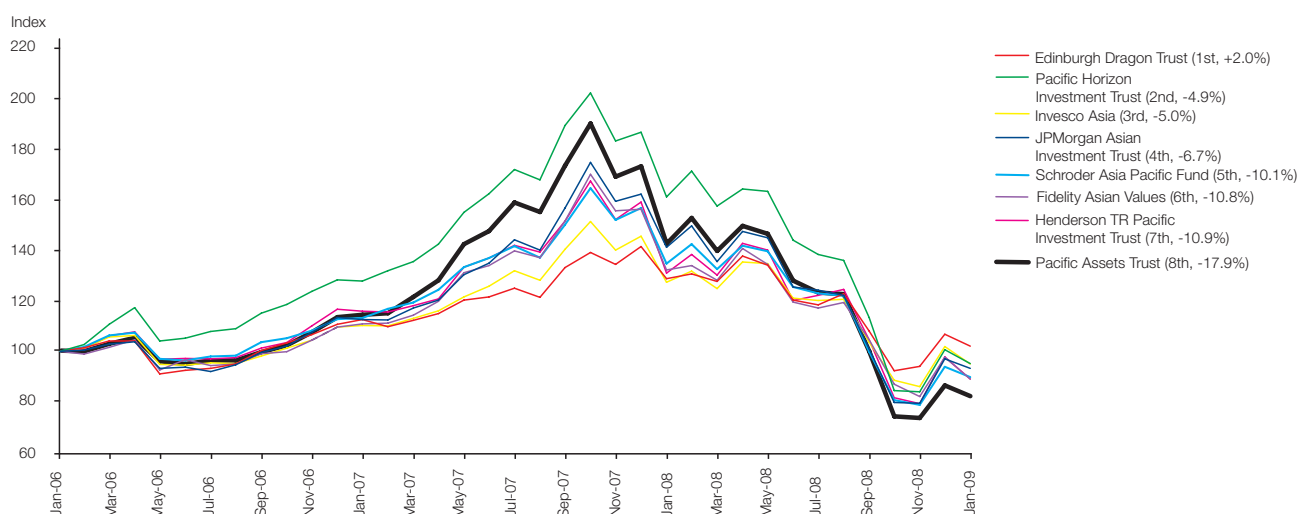
Financial Highlights

- Net asset value per share decreased by 42.3 per cent
- Share price decreased by 40.9 per cent
- Final dividend increased by 15.2 per cent 1.29p per share

One Year Net Asset Value Total Return Peer Group Performance



Three Year Net Asset Value Total Return Peer Group Performance



Performance Summary

	31 January 2009	31 January 2008	% change
Capital			
Net asset value per share	74.15p	128.52p	-42.3
MSCI All Country Far East ex Japan Index	177.87p	245.76	-27.6
Share Price			
Share price (mid market)	68.25p	115.50p	-40.9
Discount (difference between share price and net asset value per share)	8.0%	10.1%	
Total Return*			
Net asset value			-41.3
MSCI All Country Far East ex Japan Index			-25.2
Share price			-40.4
Gearing†			
Actual Gearing (net of cash)	(4.9)%	5.9%	
Revenue and Dividends			
Revenue return per share	1.78p	1.24p	+43.5
Dividends per share	1.29p	1.12p	+15.2
Total Expense Ratio (as percentage of average shareholders' funds)	1.6%	1.5%	
Year's Highs/Lows			
	Year ended 31 January 2009 High	Year ended 31 January 2009 Low	
Net asset value per share	139.31p	56.80p	
Share price	128.50p	55.50p	
(Premium)/discount‡	(2.75)%	15.74%	

* All total returns are based on net dividends re-invested

† Gearing: Borrowings ÷ Shareholders' Funds

‡ Discount high – Narrowest discount in period

Discount low – Widest discount in period

Sources: F&C Investment Business, AIC and Datastream.