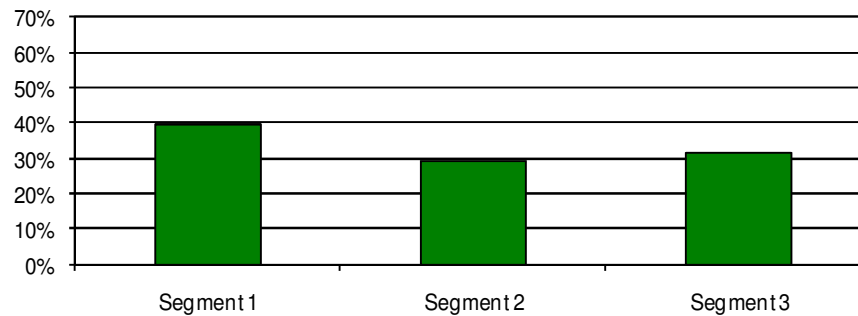


Payment Status by Risk Segment¹

NCMSLT as of December 31, 2011

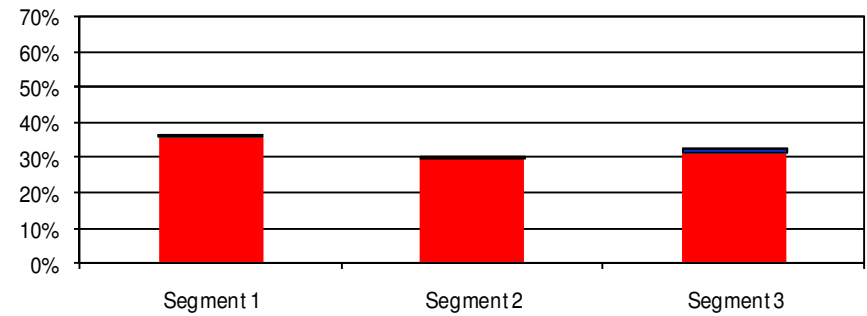
Segment Distribution by Original Loan Amount

NCMSLT



Segment Distribution by Outstanding Loan Amount²

NCMSLT



■ Not in repayment³
■ In Repayment

(1) Please refer to our most recent Form 10-Q, filed November 8, 2011, for a description of credit risk segments

(2) Outstanding aggregate principal and capitalized interest balance as of December 31, 2011

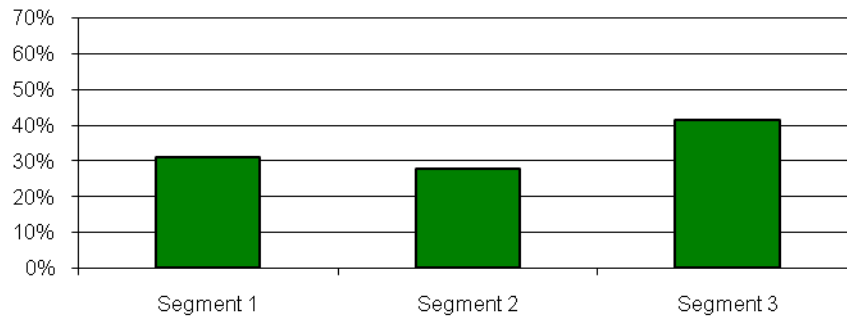
(3) Loans "not in repayment" include loans in deferment or forbearance status as of December 31, 2011

Payment Status by Risk Segment¹

NCSLT 2003-1 as of December 31, 2011

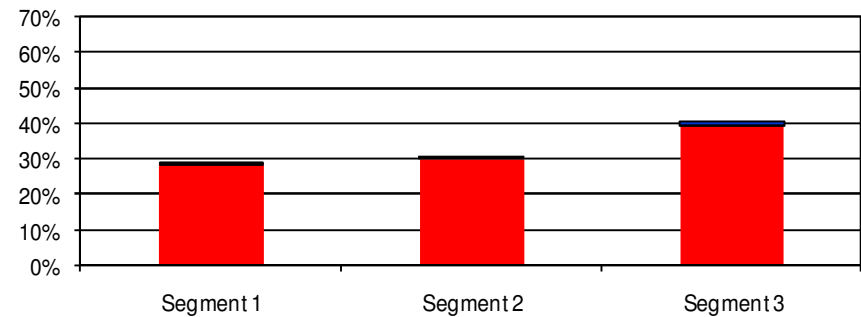
Segment Distribution by Original Loan Amount

NCSLT 2003-1



Segment Distribution by Outstanding Loan Amount²

NCSLT 2003-1



■ Not in repayment³
■ In Repayment

(1) Please refer to our most recent Form 10-Q, filed November 8, 2011, for a description of credit risk segments

(2) Outstanding aggregate principal and capitalized interest balance as of December 31, 2011

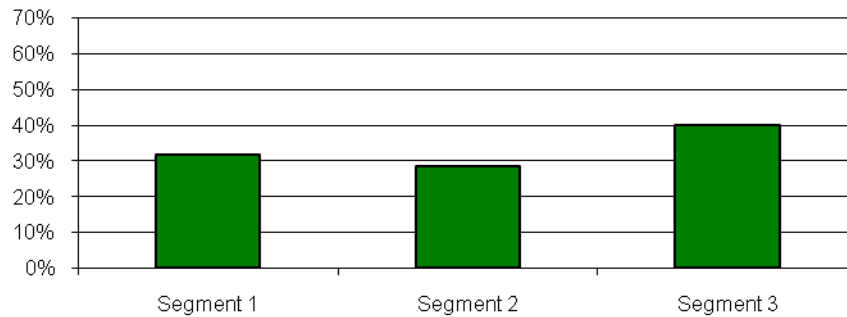
(3) Loans "not in repayment" include loans in deferment or forbearance status as of December 31, 2011

Payment Status by Risk Segment¹

NCSLT 2004-1 as of December 31, 2011

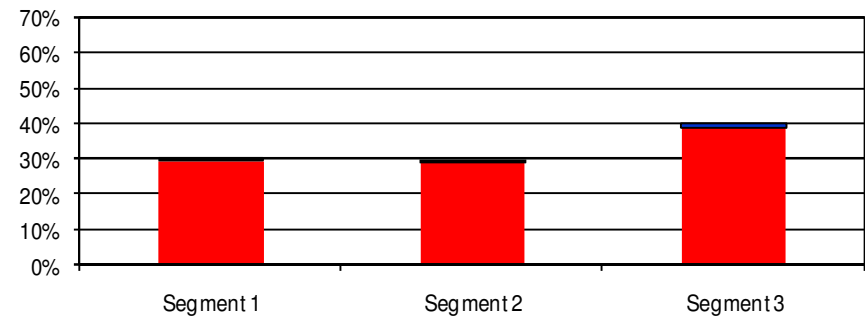
Segment Distribution by Original Loan Amount

NCSLT 2004-1



Segment Distribution by Outstanding Loan Amount²

NCSLT 2004-1



■ Not in repayment³
■ In Repayment

(1) Please refer to our most recent Form 10-Q, filed November 8, 2011, for a description of credit risk segments

(2) Outstanding aggregate principal and capitalized interest balance as of December 31, 2011

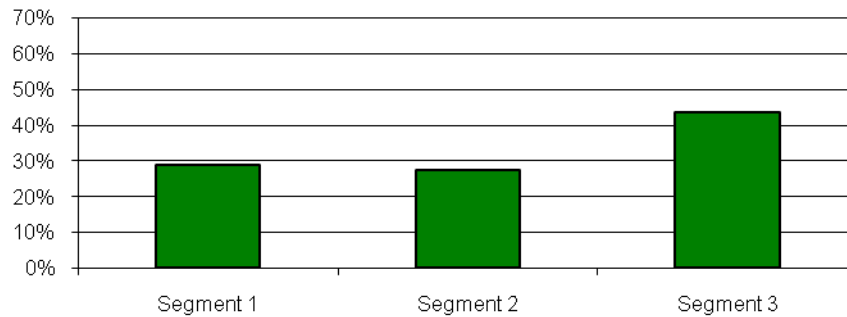
(3) Loans "not in repayment" include loans in deferment or forbearance status as of December 31, 2011

Payment Status by Risk Segment¹

NCSLT 2004-2 as of December 31, 2011

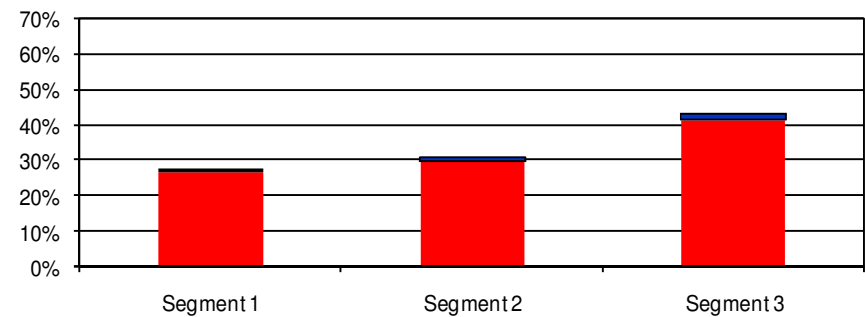
Segment Distribution by Original Loan Amount

NCSLT 2004-2



Segment Distribution by Outstanding Loan Amount²

NCSLT 2004-2



■ Not in repayment³
■ In Repayment

(1) Please refer to our most recent Form 10-Q, filed November 8, 2011, for a description of credit risk segments

(2) Outstanding aggregate principal and capitalized interest balance as of December 31, 2011

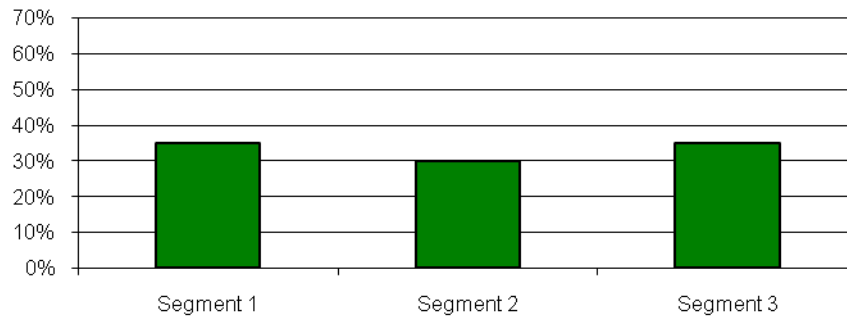
(3) Loans "not in repayment" include loans in deferment or forbearance status as of December 31, 2011

Payment Status by Risk Segment¹

NCSLT 2005-1 as of December 31, 2011

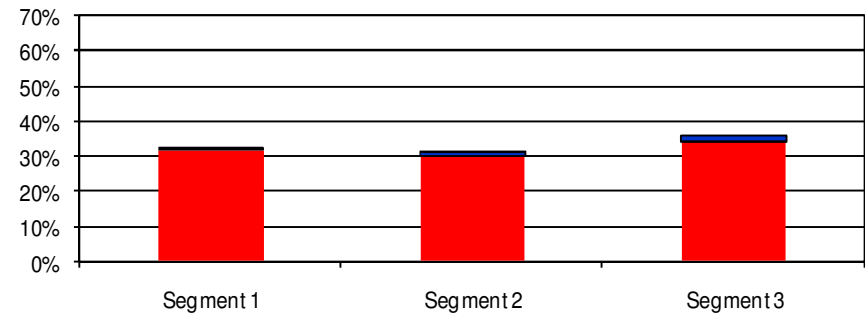
Segment Distribution by Original Loan Amount

NCSLT 2005-1



Segment Distribution by Outstanding Loan Amount²

NCSLT 2005-1



■ Not in repayment³
■ In Repayment

(1) Please refer to our most recent Form 10-Q, filed November 8, 2011, for a description of credit risk segments

(2) Outstanding aggregate principal and capitalized interest balance as of December 31, 2011

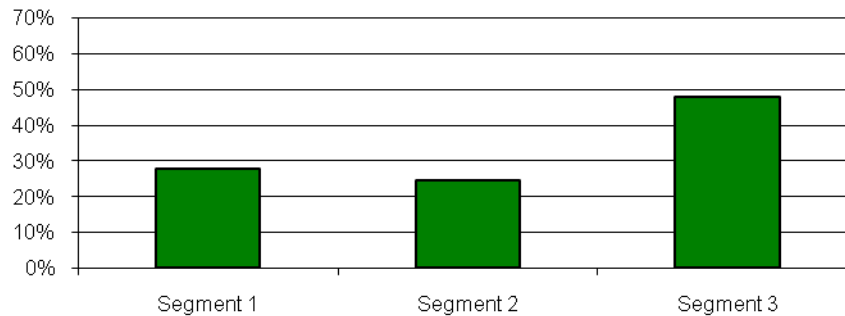
(3) Loans "not in repayment" include loans in deferment or forbearance status as of December 31, 2011

Payment Status by Risk Segment¹

NCSLT 2005-2 as of December 31, 2011

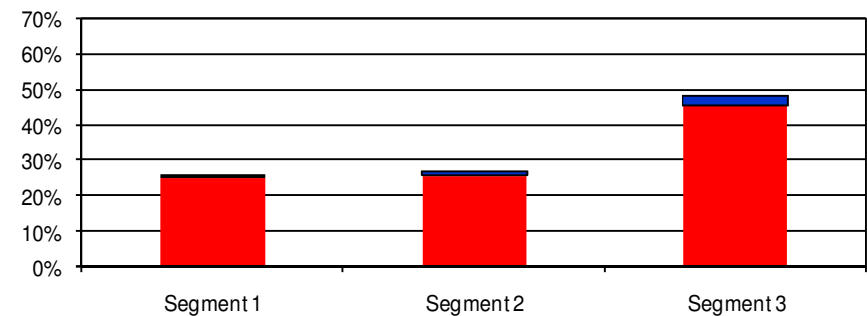
Segment Distribution by Original Loan Amount

NCSLT 2005-2



Segment Distribution by Outstanding Loan Amount²

NCSLT 2005-2



■ Not in repayment³
■ In Repayment

(1) Please refer to our most recent Form 10-Q, filed November 8, 2011, for a description of credit risk segments

(2) Outstanding aggregate principal and capitalized interest balance as of December 31, 2011

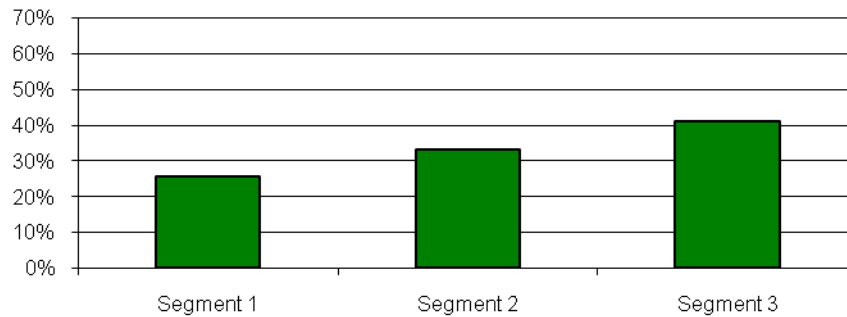
(3) Loans "not in repayment" include loans in deferment or forbearance status as of December 31, 2011

Payment Status by Risk Segment¹

NCSLT 2005-3 as of December 31, 2011

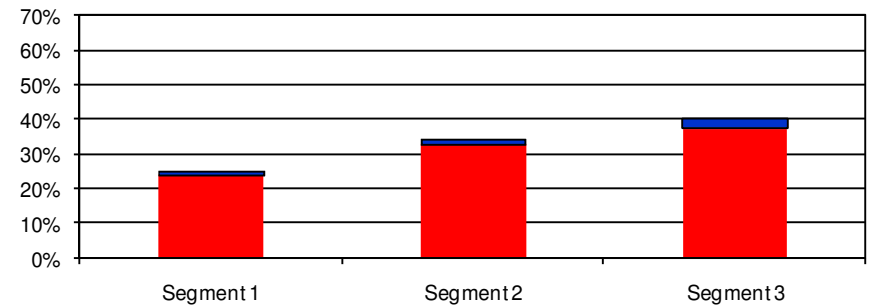
Segment Distribution by Original Loan Amount

NCSLT 2005-3



Segment Distribution by Outstanding Loan Amount²

NCSLT 2005-3



■ Not in repayment³
■ In Repayment

(1) Please refer to our most recent Form 10-Q, filed November 8, 2011, for a description of credit risk segments

(2) Outstanding aggregate principal and capitalized interest balance as of December 31, 2011

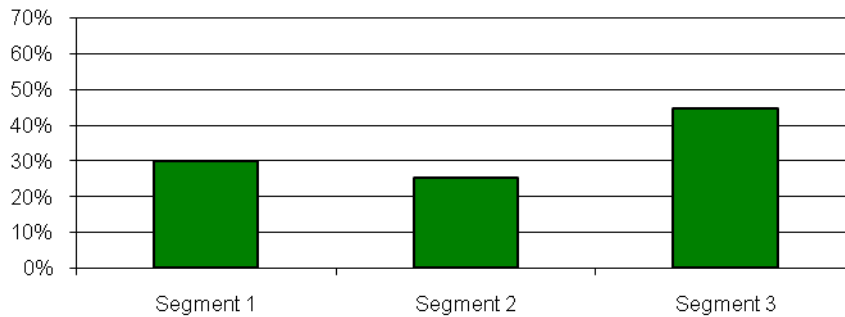
(3) Loans "not in repayment" include loans in deferment or forbearance status as of December 31, 2011

Payment Status by Risk Segment¹

NCSLT 2006-1 as of December 31, 2011

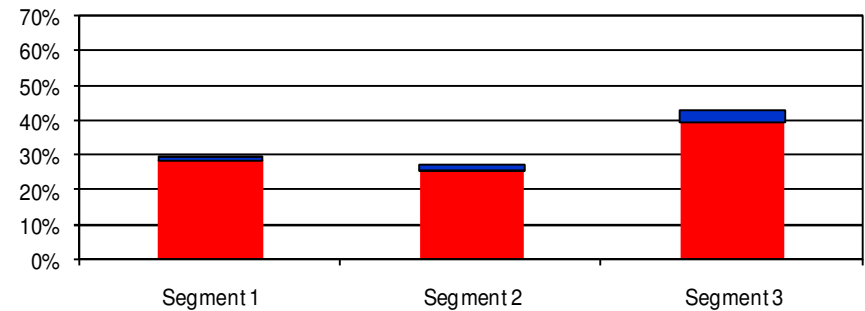
Segment Distribution by Original Loan Amount

NCSLT 2006-1



Segment Distribution by Outstanding Loan Amount²

NCSLT 2006-1



■ Not in repayment³
■ In Repayment

(1) Please refer to our most recent Form 10-Q, filed November 8, 2011, for a description of credit risk segments

(2) Outstanding aggregate principal and capitalized interest balance as of December 31, 2011

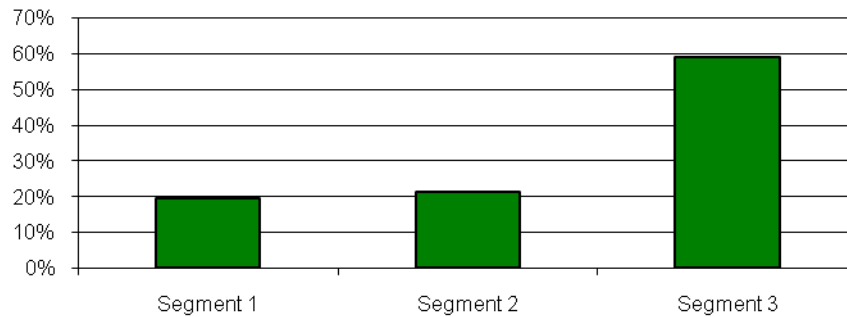
(3) Loans "not in repayment" include loans in deferment or forbearance status as of December 31, 2011

Payment Status by Risk Segment¹

NCSLT 2006-2 as of December 31, 2011

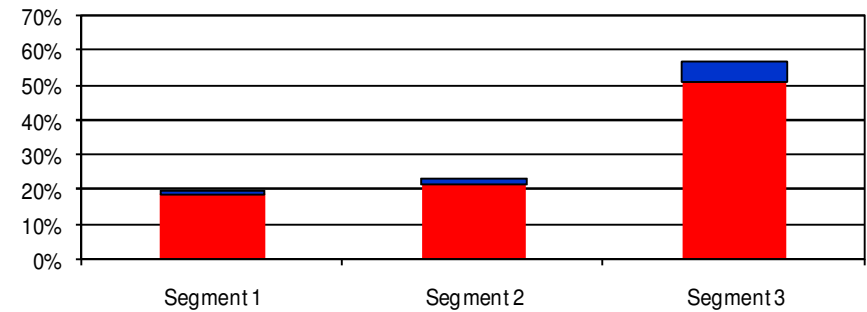
Segment Distribution by Original Loan Amount

NCSLT 2006-2



Segment Distribution by Outstanding Loan Amount²

NCSLT 2006-2



■ Not in repayment³
■ In Repayment

(1) Please refer to our most recent Form 10-Q, filed November 8, 2011, for a description of credit risk segments

(2) Outstanding aggregate principal and capitalized interest balance as of December 31, 2011

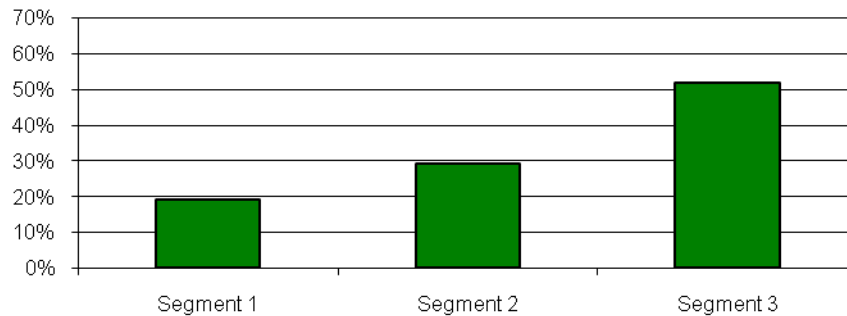
(3) Loans "not in repayment" include loans in deferment or forbearance status as of December 31, 2011

Payment Status by Risk Segment¹

NCSLT 2006-3 as of December 31, 2011

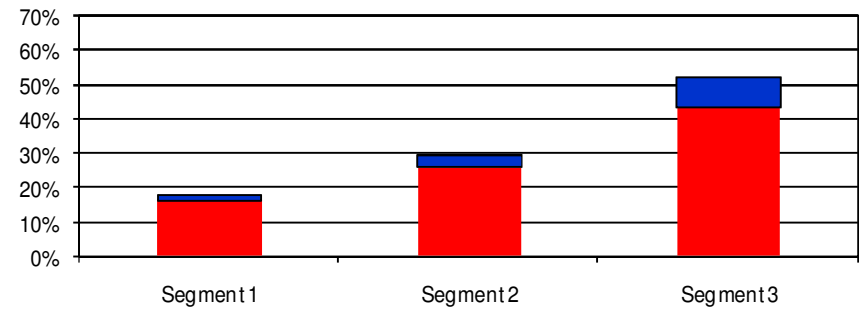
Segment Distribution by Original Loan Amount

NCSLT 2006-3



Segment Distribution by Outstanding Loan Amount²

NCSLT 2006-3



■ Not in repayment³
■ In Repayment

(1) Please refer to our most recent Form 10-Q, filed November 8, 2011, for a description of credit risk segments

(2) Outstanding aggregate principal and capitalized interest balance as of December 31, 2011

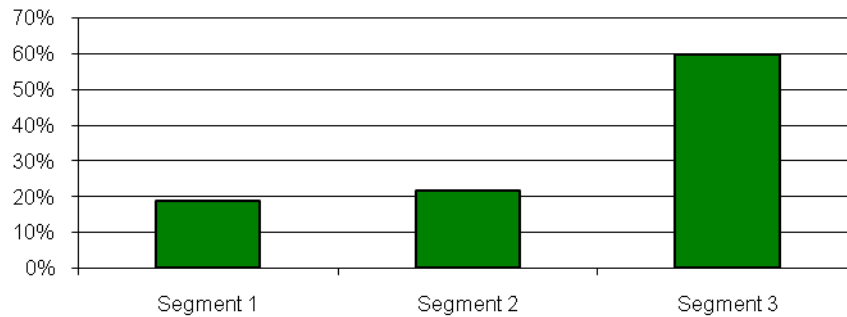
(3) Loans "not in repayment" include loans in deferment or forbearance status as of December 31, 2011

Payment Status by Risk Segment¹

NCSLT 2006-4 as of December 31, 2011

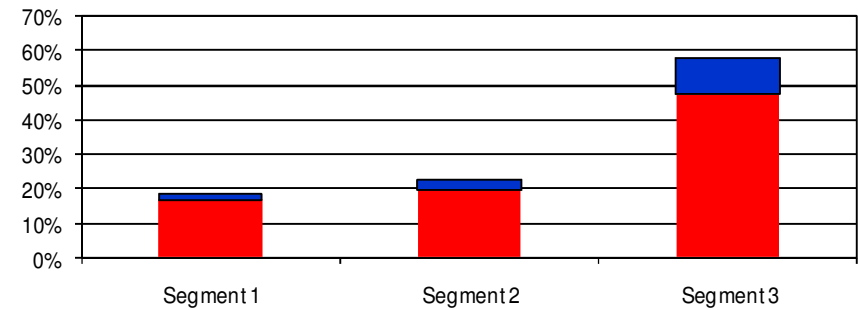
Segment Distribution by Original Loan Amount

NCSLT 2006-4



Segment Distribution by Outstanding Loan Amount²

NCSLT 2006-4



■ Not in repayment³
■ In Repayment

(1) Please refer to our most recent Form 10-Q, filed November 8, 2011, for a description of credit risk segments

(2) Outstanding aggregate principal and capitalized interest balance as of December 31, 2011

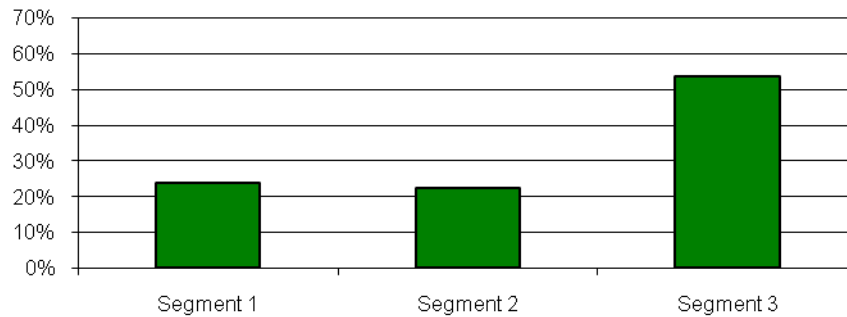
(3) Loans "not in repayment" include loans in deferment or forbearance status as of December 31, 2011

Payment Status by Risk Segment¹

NCSLT 2007-1 as of December 31, 2011

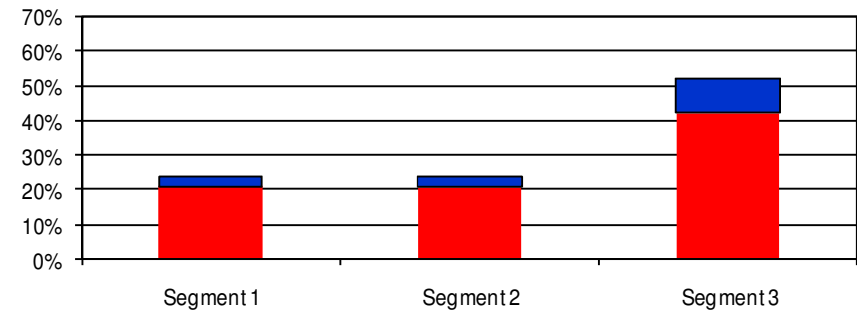
Segment Distribution by Original Loan Amount

NCSLT 2007-1



Segment Distribution by Outstanding Loan Amount²

NCSLT 2007-1



■ Not in repayment³
■ In Repayment

(1) Please refer to our most recent Form 10-Q, filed November 8, 2011, for a description of credit risk segments

(2) Outstanding aggregate principal and capitalized interest balance as of December 31, 2011

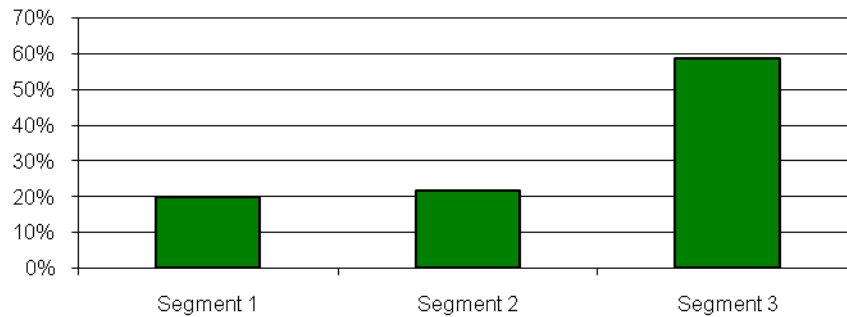
(3) Loans "not in repayment" include loans in deferment or forbearance status as of December 31, 2011

Payment Status by Risk Segment¹

NCSLT 2007-2 as of December 31, 2011

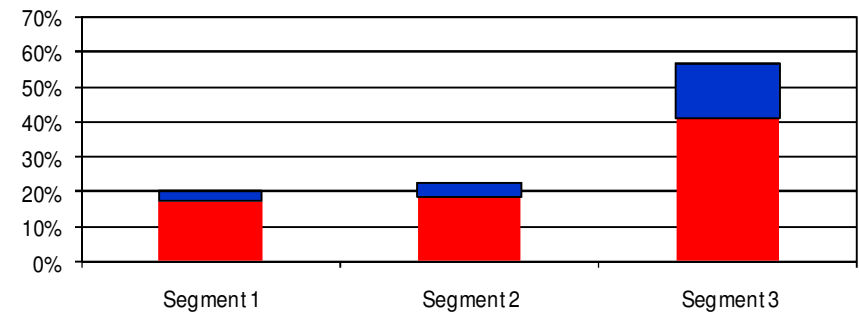
Segment Distribution by Original Loan Amount

NCSLT 2007-2



Segment Distribution by Outstanding Loan Amount²

NCSLT 2007-2



■ Not in repayment³
■ In Repayment

(1) Please refer to our most recent Form 10-Q, filed November 8, 2011, for a description of credit risk segments

(2) Outstanding aggregate principal and capitalized interest balance as of December 31, 2011

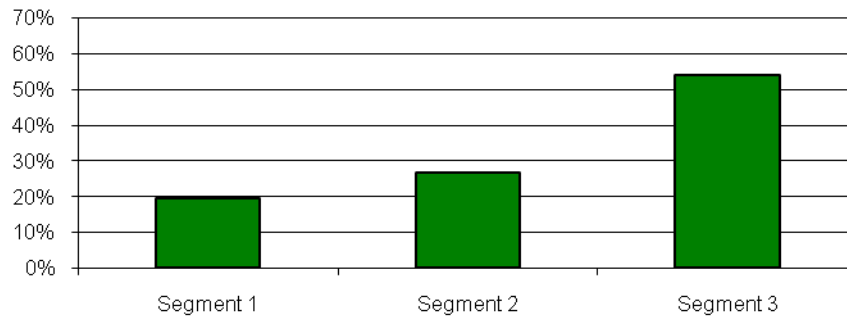
(3) Loans "not in repayment" include loans in deferment or forbearance status as of December 31, 2011

Payment Status by Risk Segment¹

NCSLT 2007-3 as of December 31, 2011

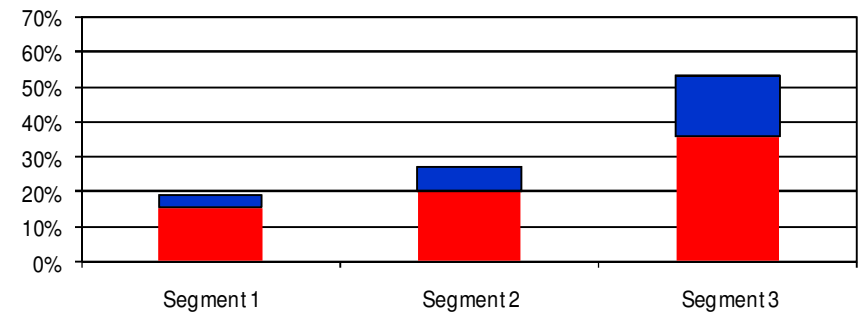
Segment Distribution by Original Loan Amount

NCSLT 2007-3



Segment Distribution by Outstanding Loan Amount²

NCSLT 2007-3



■ Not in repayment³
■ In Repayment

(1) Please refer to our most recent Form 10-Q, filed November 8, 2011, for a description of credit risk segments

(2) Outstanding aggregate principal and capitalized interest balance as of December 31, 2011

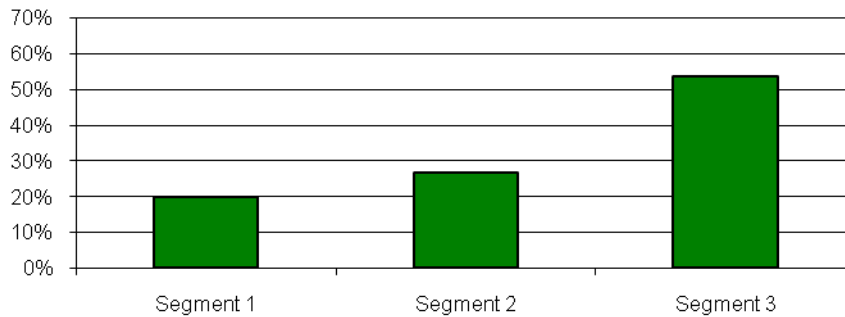
(3) Loans "not in repayment" include loans in deferment or forbearance status as of December 31, 2011

Payment Status by Risk Segment¹

NCSLT 2007-4 as of December 31, 2011

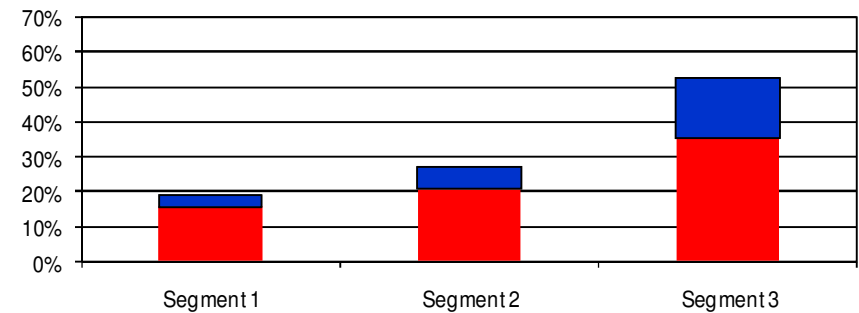
Segment Distribution by Original Loan Amount

NCSLT 2007-4



Segment Distribution by Outstanding Loan Amount²

NCSLT 2007-4



■ Not in repayment³
■ In Repayment

(1) Please refer to our most recent Form 10-Q, filed November 8, 2011, for a description of credit risk segments

(2) Outstanding aggregate principal and capitalized interest balance as of December 31, 2011

(3) Loans "not in repayment" include loans in deferment or forbearance status as of December 31, 2011