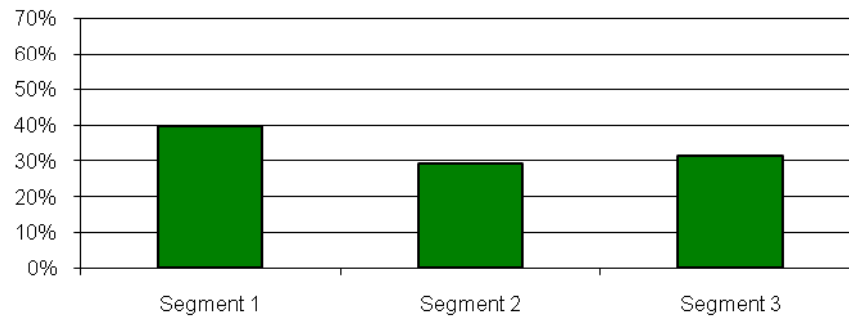


Payment Status by Risk Segment¹

NCMSLT as of June 30, 2011

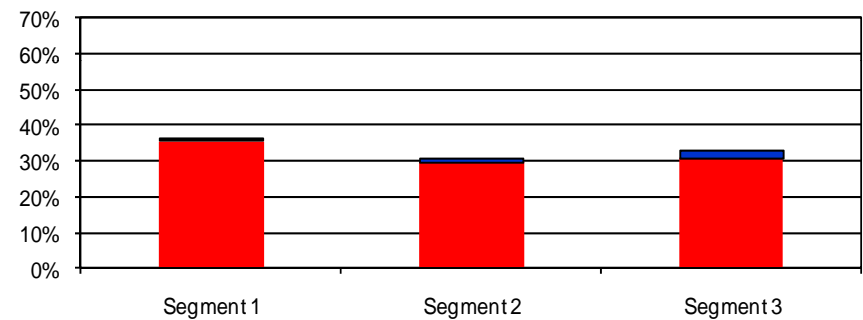
Segment Distribution by Original Loan Amount

NCMSLT



Segment Distribution by Outstanding Loan Amount²

NCMSLT



■ Not in repayment³
■ In Repayment

(1) Please refer to our most recent Form 10-Q, filed May 16, 2011, for a description of credit risk segments

(2) Outstanding aggregate principal and capitalized interest balance as of June 30, 2011

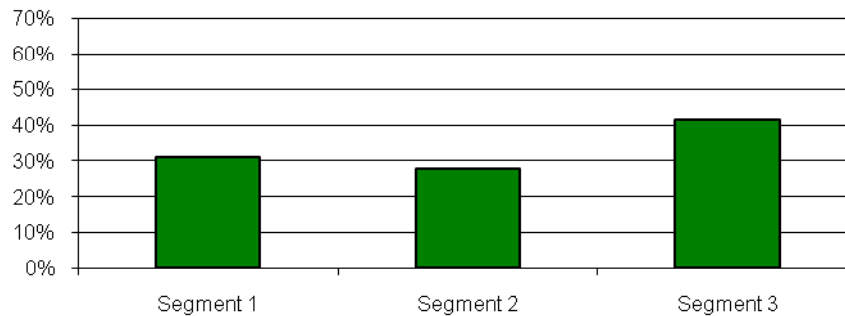
(3) Loans "not in repayment" include loans in deferment or forbearance status as of June 30, 2011

Payment Status by Risk Segment¹

NCSLT 2003-1 as of June 30, 2011

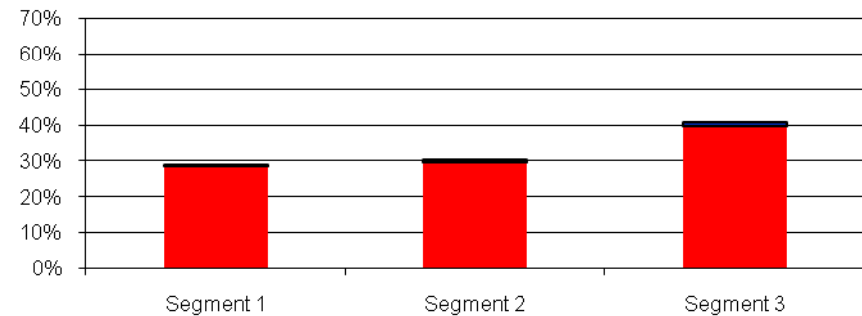
Segment Distribution by Original Loan Amount

NCSLT 2003-1



Segment Distribution by Outstanding Loan Amount²

NCSLT 2003-1



■ Not in repayment³
■ In Repayment

(1) Please refer to our most recent Form 10-Q, filed May 16, 2011, for a description of credit risk segments

(2) Outstanding aggregate principal and capitalized interest balance as of June 30, 2011

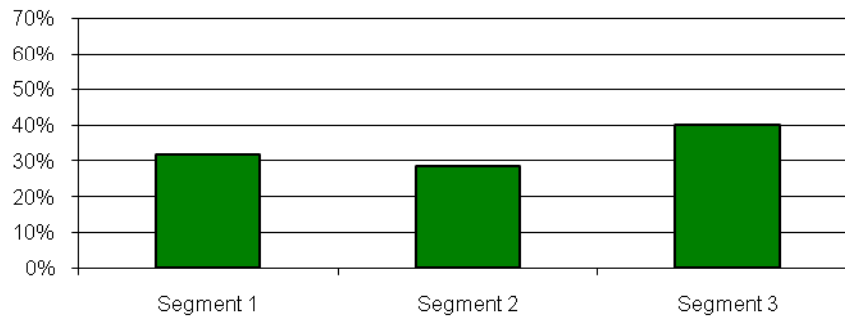
(3) Loans "not in repayment" include loans in deferment or forbearance status as of June 30, 2011

Payment Status by Risk Segment¹

NCSLT 2004-1 as of June 30, 2011

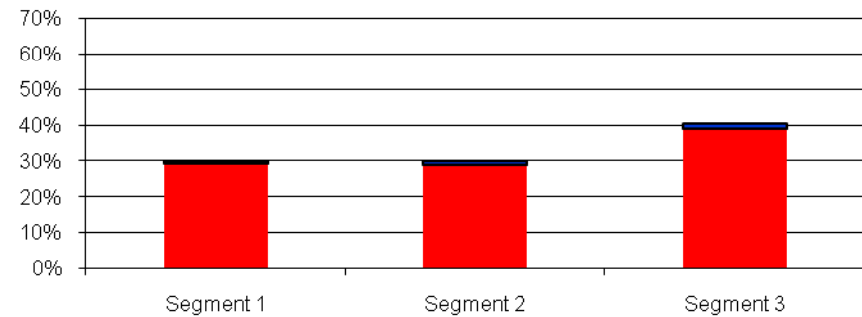
Segment Distribution by Original Loan Amount

NCSLT 2004-1



Segment Distribution by Outstanding Loan Amount²

NCSLT 2004-1



■ Not in repayment³
■ In Repayment

(1) Please refer to our most recent Form 10-Q, filed May 16, 2011, for a description of credit risk segments

(2) Outstanding aggregate principal and capitalized interest balance as of June 30, 2011

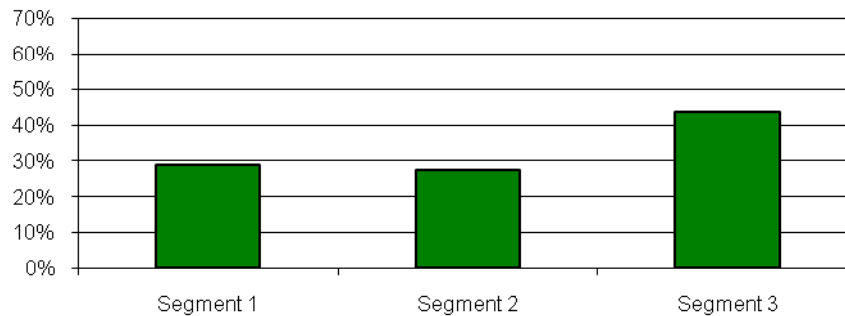
(3) Loans "not in repayment" include loans in deferment or forbearance status as of June 30, 2011

Payment Status by Risk Segment¹

NCSLT 2004-2 as of June 30, 2011

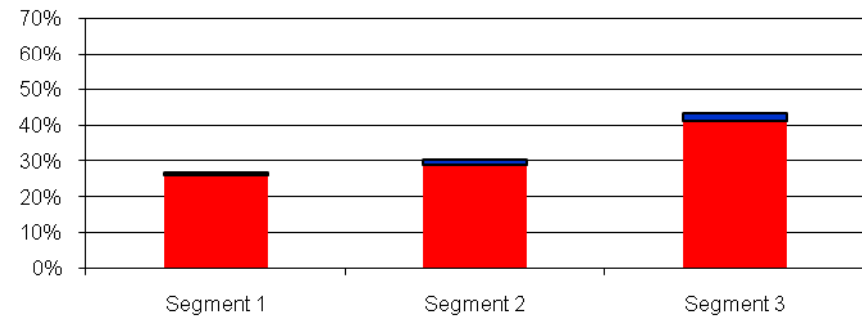
Segment Distribution by Original Loan Amount

NCSLT 2004-2



Segment Distribution by Outstanding Loan Amount²

NCSLT 2004-2



■ Not in repayment³
■ In Repayment

(1) Please refer to our most recent Form 10-Q, filed May 16, 2011, for a description of credit risk segments

(2) Outstanding aggregate principal and capitalized interest balance as of June 30, 2011

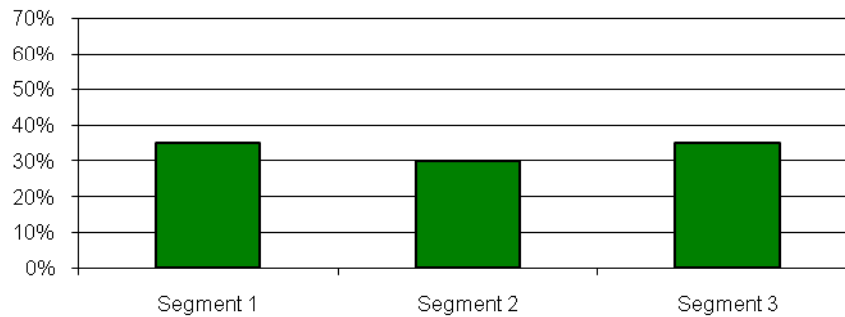
(3) Loans "not in repayment" include loans in deferment or forbearance status as of June 30, 2011

Payment Status by Risk Segment¹

NCSLT 2005-1 as of June 30, 2011

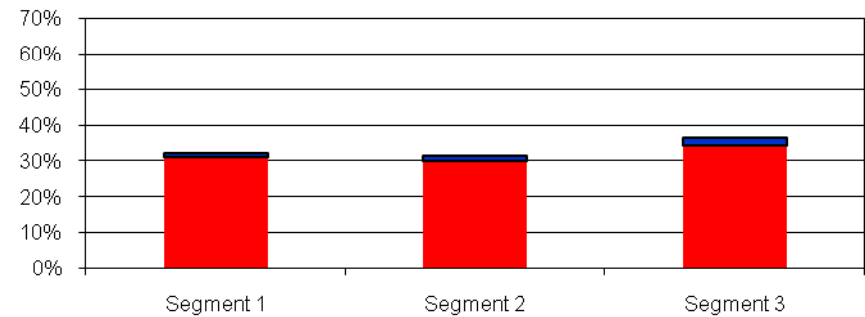
Segment Distribution by Original Loan Amount

NCSLT 2005-1



Segment Distribution by Outstanding Loan Amount²

NCSLT 2005-1



■ Not in repayment³
■ In Repayment

(1) Please refer to our most recent Form 10-Q, filed May 16, 2011, for a description of credit risk segments

(2) Outstanding aggregate principal and capitalized interest balance as of June 30, 2011

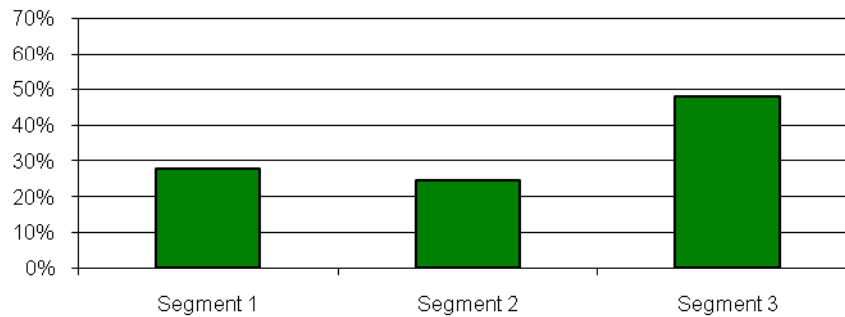
(3) Loans "not in repayment" include loans in deferment or forbearance status as of June 30, 2011

Payment Status by Risk Segment¹

NCSLT 2005-2 as of June 30, 2011

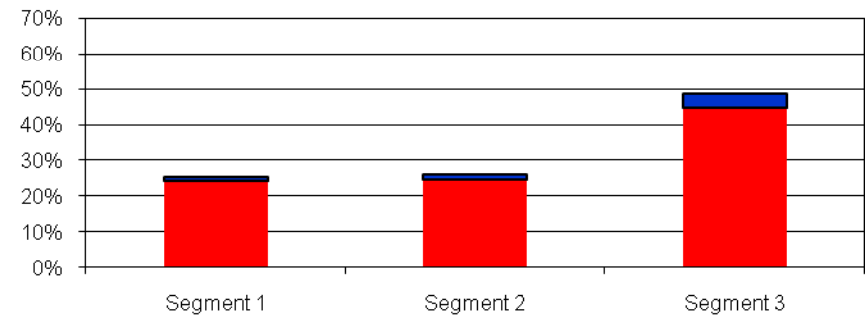
Segment Distribution by Original Loan Amount

NCSLT 2005-2



Segment Distribution by Outstanding Loan Amount²

NCSLT 2005-2



■ Not in repayment³
■ In Repayment

(1) Please refer to our most recent Form 10-Q, filed May 16, 2011, for a description of credit risk segments

(2) Outstanding aggregate principal and capitalized interest balance as of June 30, 2011

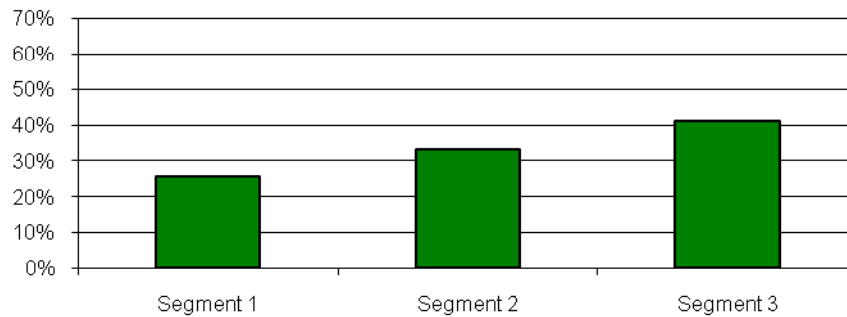
(3) Loans "not in repayment" include loans in deferment or forbearance status as of June 30, 2011

Payment Status by Risk Segment¹

NCSLT 2005-3 as of June 30, 2011

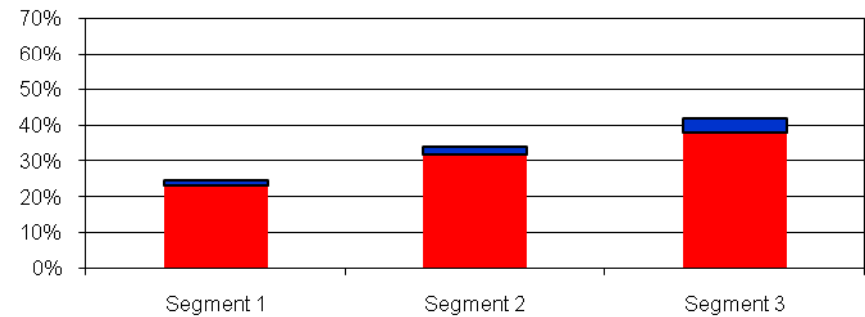
Segment Distribution by Original Loan Amount

NCSLT 2005-3



Segment Distribution by Outstanding Loan Amount²

NCSLT 2005-3



■ Not in repayment³
■ In Repayment

(1) Please refer to our most recent Form 10-Q, filed May 16, 2011, for a description of credit risk segments

(2) Outstanding aggregate principal and capitalized interest balance as of June 30, 2011

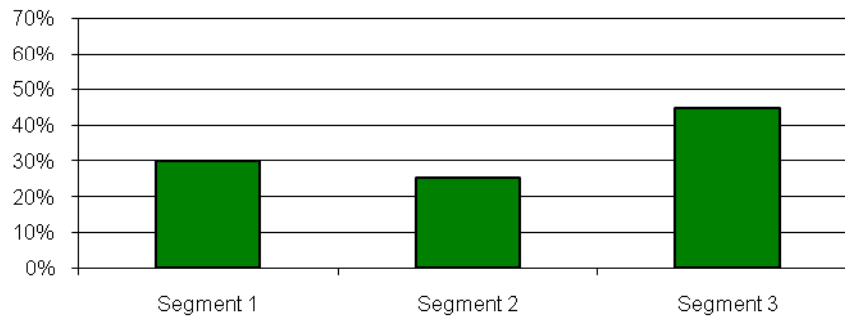
(3) Loans "not in repayment" include loans in deferment or forbearance status as of June 30, 2011

Payment Status by Risk Segment¹

NCSLT 2006-1 as of June 30, 2011

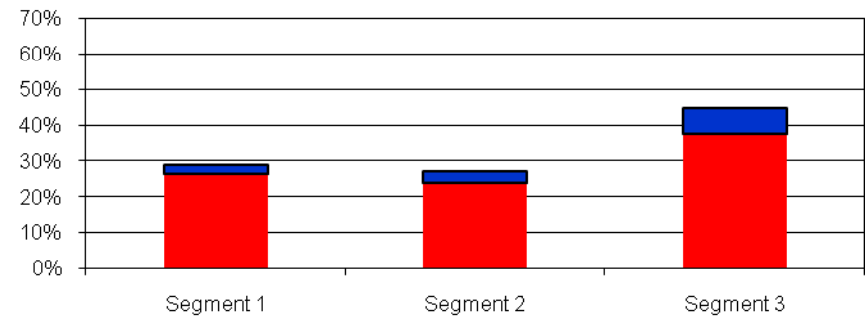
Segment Distribution by Original Loan Amount

NCSLT 2006-1



Segment Distribution by Outstanding Loan Amount²

NCSLT 2006-1



■ Not in repayment³
■ In Repayment

(1) Please refer to our most recent Form 10-Q, filed May 16, 2011, for a description of credit risk segments

(2) Outstanding aggregate principal and capitalized interest balance as of June 30, 2011

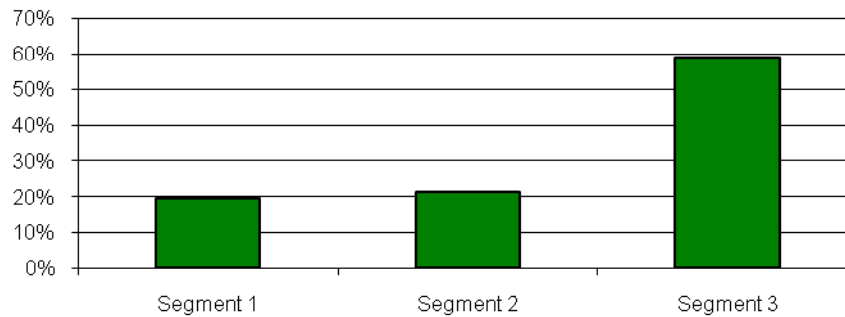
(3) Loans "not in repayment" include loans in deferment or forbearance status as of June 30, 2011

Payment Status by Risk Segment¹

NCSLT 2006-2 as of June 30, 2011

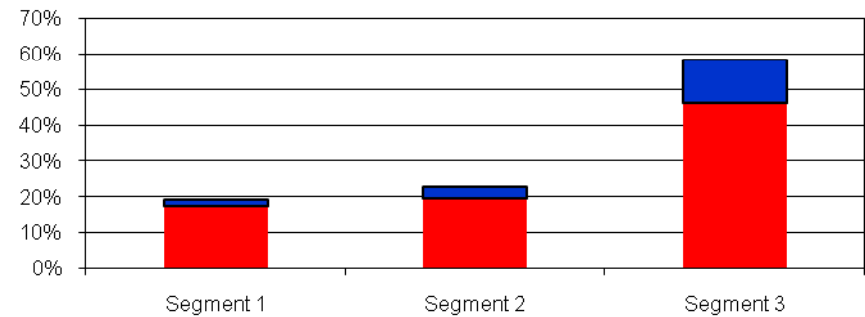
Segment Distribution by Original Loan Amount

NCSLT 2006-2



Segment Distribution by Outstanding Loan Amount²

NCSLT 2006-2



■ Not in repayment³
■ In Repayment

(1) Please refer to our most recent Form 10-Q, filed May 16, 2011, for a description of credit risk segments

(2) Outstanding aggregate principal and capitalized interest balance as of June 30, 2011

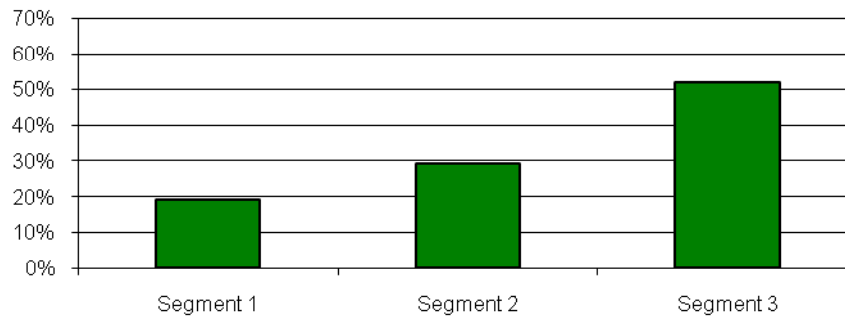
(3) Loans "not in repayment" include loans in deferment or forbearance status as of June 30, 2011

Payment Status by Risk Segment¹

NCSLT 2006-3 as of June 30, 2011

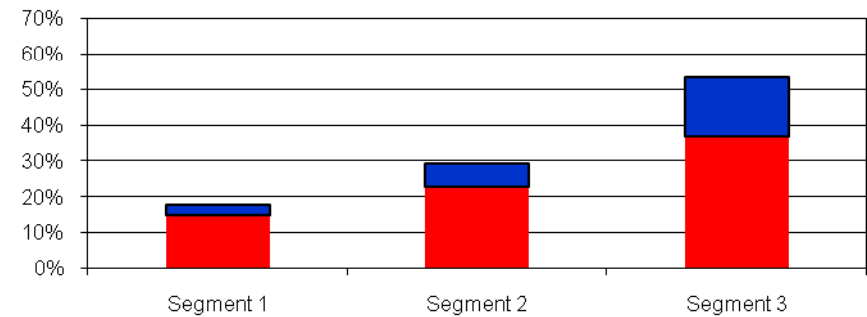
Segment Distribution by Original Loan Amount

NCSLT 2006-3



Segment Distribution by Outstanding Loan Amount²

NCSLT 2006-3



■ Not in repayment³
■ In Repayment

(1) Please refer to our most recent Form 10-Q, filed May 16, 2011, for a description of credit risk segments

(2) Outstanding aggregate principal and capitalized interest balance as of June 30, 2011

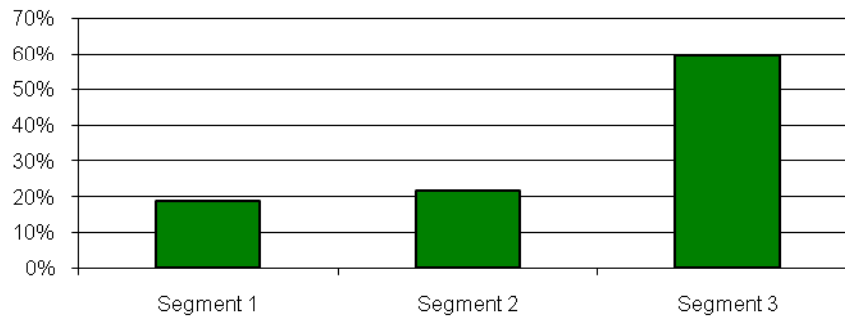
(3) Loans "not in repayment" include loans in deferment or forbearance status as of June 30, 2011

Payment Status by Risk Segment¹

NCSLT 2006-4 as of June 30, 2011

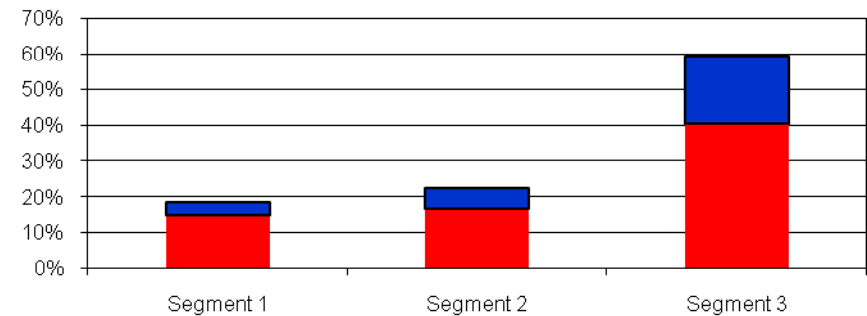
Segment Distribution by Original Loan Amount

NCSLT 2006-4



Segment Distribution by Outstanding Loan Amount²

NCSLT 2006-4



■ Not in repayment³
■ In Repayment

(1) Please refer to our most recent Form 10-Q, filed May 16, 2011, for a description of credit risk segments

(2) Outstanding aggregate principal and capitalized interest balance as of June 30, 2011

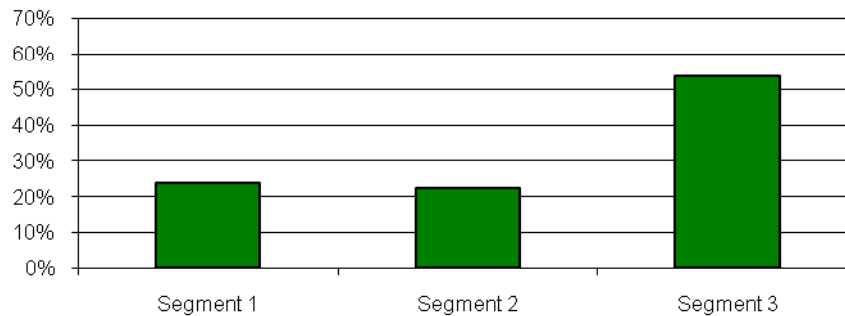
(3) Loans "not in repayment" include loans in deferment or forbearance status as of June 30, 2011

Payment Status by Risk Segment¹

NCSLT 2007-1 as of June 30, 2011

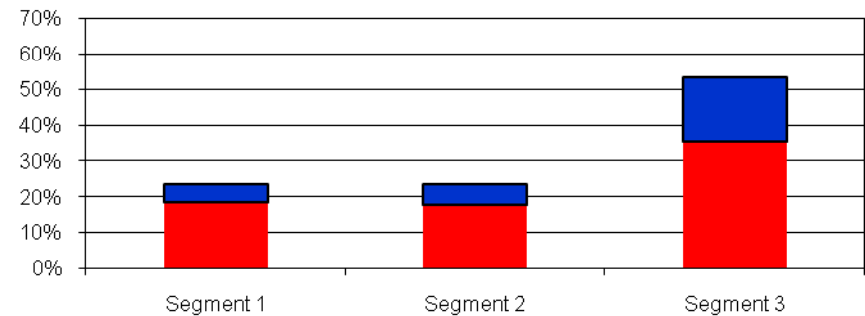
Segment Distribution by Original Loan Amount

NCSLT 2007-1



Segment Distribution by Outstanding Loan Amount²

NCSLT 2007-1



■ Not in repayment³
■ In Repayment

(1) Please refer to our most recent Form 10-Q, filed May 16, 2011, for a description of credit risk segments

(2) Outstanding aggregate principal and capitalized interest balance as of June 30, 2011

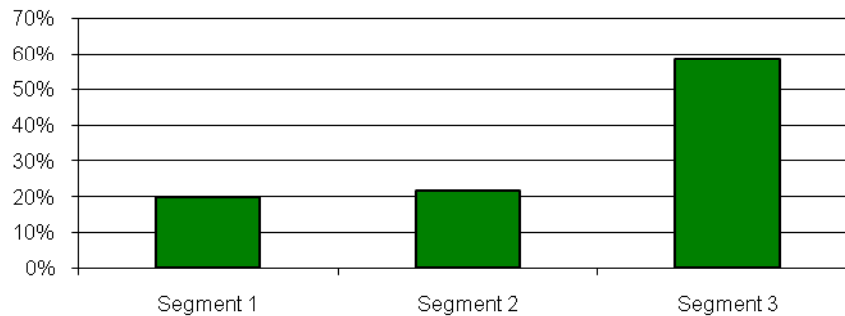
(3) Loans "not in repayment" include loans in deferment or forbearance status as of June 30, 2011

Payment Status by Risk Segment¹

NCSLT 2007-2 as of June 30, 2011

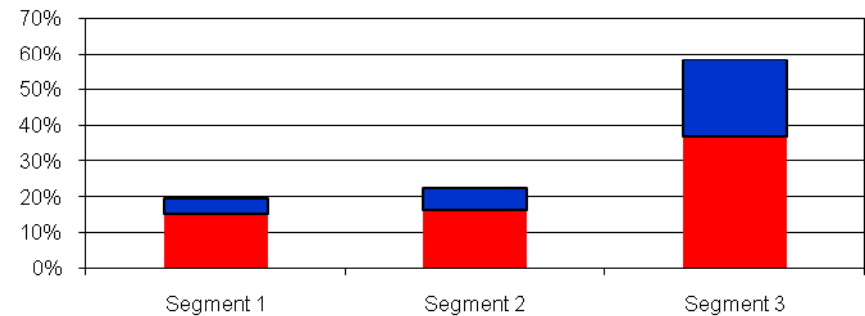
Segment Distribution by Original Loan Amount

NCSLT 2007-2



Segment Distribution by Outstanding Loan Amount²

NCSLT 2007-2



■ Not in repayment³
■ In Repayment

(1) Please refer to our most recent Form 10-Q, filed May 16, 2011, for a description of credit risk segments

(2) Outstanding aggregate principal and capitalized interest balance as of June 30, 2011

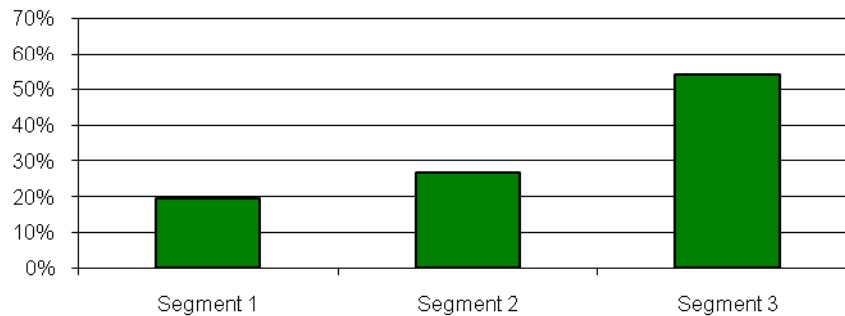
(3) Loans "not in repayment" include loans in deferment or forbearance status as of June 30, 2011

Payment Status by Risk Segment¹

NCSLT 2007-3 as of June 30, 2011

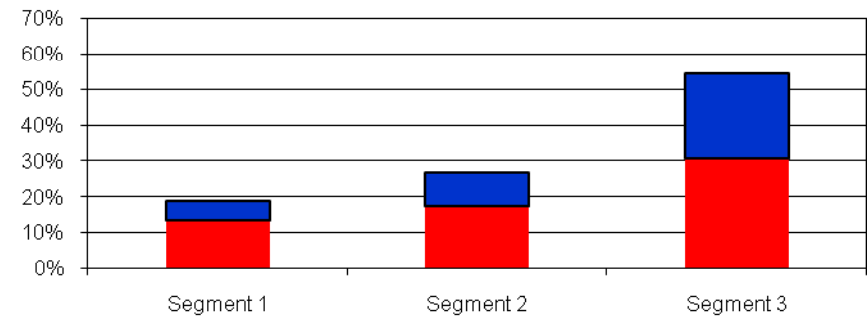
Segment Distribution by Original Loan Amount

NCSLT 2007-3



Segment Distribution by Outstanding Loan Amount²

NCSLT 2007-3



■ Not in repayment³
■ In Repayment

(1) Please refer to our most recent Form 10-Q, filed May 16, 2011, for a description of credit risk segments

(2) Outstanding aggregate principal and capitalized interest balance as of June 30, 2011

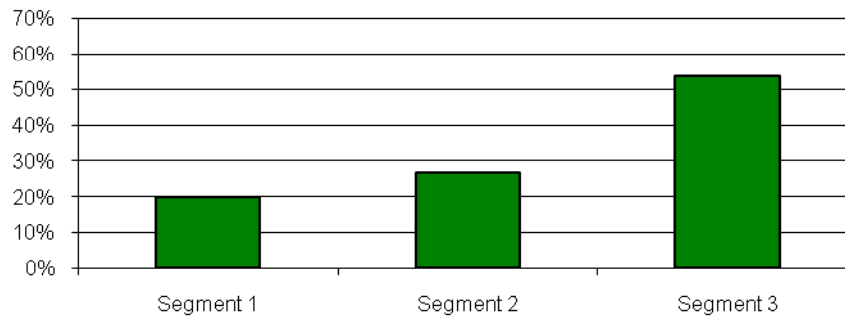
(3) Loans "not in repayment" include loans in deferment or forbearance status as of June 30, 2011

Payment Status by Risk Segment¹

NCSLT 2007-4 as of June 30, 2011

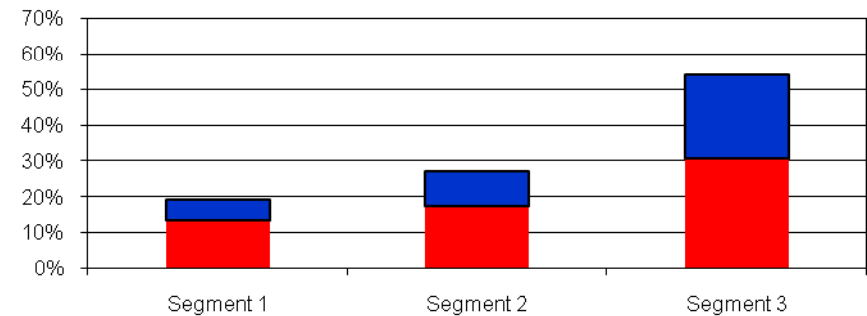
Segment Distribution by Original Loan Amount

NCSLT 2007-4



Segment Distribution by Outstanding Loan Amount²

NCSLT 2007-4



■ Not in repayment³
■ In Repayment

(1) Please refer to our most recent Form 10-Q, filed May 16, 2011, for a description of credit risk segments

(2) Outstanding aggregate principal and capitalized interest balance as of June 30, 2011

(3) Loans "not in repayment" include loans in deferment or forbearance status as of June 30, 2011